

*Mid-Columbia
Manor Incorporated*

Smith Tower's unique circular 15-story design is a magnificent Vancouver landmark. Sponsored by Mid-Columbia Manor, Inc. this non-profit corporation is comprised of local Labor Unions. Smith Tower's success is attributed to the dedication of these local Labor Unions, city and government assistance, and community support. Through their dedication, efforts, and support Smith Tower is able to provide affordable quality retirement living to seniors living in the beautiful city of Vancouver, Washington.

Residents & Staff

Our caring and professional staff at Smith Tower is committed to providing a happy, safe, sound, comfortable, affordable place for seniors to enjoy their retirement years. Smith Tower residents enjoy life ~ free from daily concerns. To learn more please drop by or give us a call. We look forward to meeting you!

Smith Tower
515 Washington Street
Vancouver, Washington 98660

*SMITH TOWER
APARTMENTS*



*Affordable
Retirement Living
in Downtown
Vancouver*

**515 WASHINGTON STREET
VANCOUVER, WA 98660**

Smith Tower Apartments

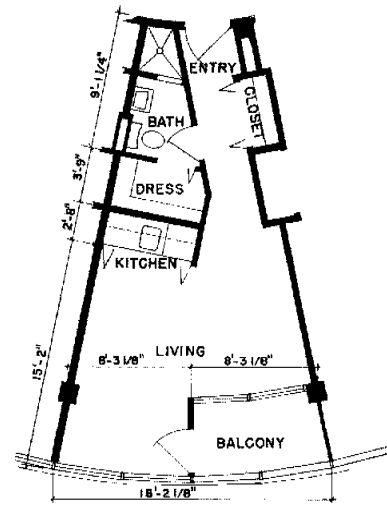
Our retirement community graces the downtown Vancouver, Washington skyline and offers 170 studio and one-bedroom apartments. Our ideal urban location on 6th and Washington street enhances opportunities for residents to easily access the many urban resources available. Our unique circular architectural design offers spectacular views of the Columbia River, City Lights, Snow Capped Mountains, and the Forest Carpeted Foothills of the Cascades.

Applicants

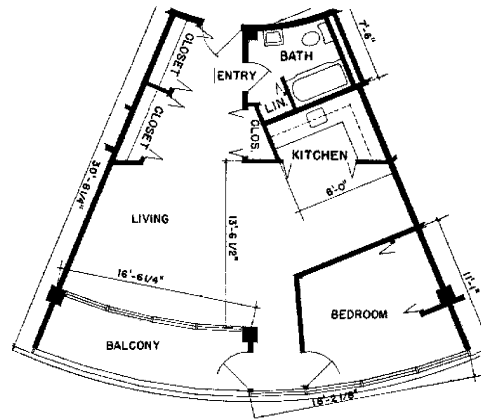
Applicants eligible for admission need to meet the following criteria: family of two or less - one of whom is age sixty-two or older, meet income guidelines set forth by HUD (where applicable), comply with tenant selection criteria, and meet the terms of the lease.

This facility does not discriminate on the basis of handicapped status in the admission or access to, or treatment or employment in, its federally assisted programs or activities. The person named below has been designated to coordinate compliance with the nondiscrimination requirements contained in the Department of Housing and Urban Development's regulations implementing Section 504 (24 DCFR Part 8 dated June 2, 1988) Patrick C. O'Toole, 1625 SE Lafayette Street, Portland, OR 97202-3862, phone 503.231.4922, fax 503.235.5915

APARTMENT FLOOR PLANS



STUDIO
APRX. 380 SQ. FT.



ONE-BEDROOM
APRX. 700 SQ. FT.



Services & Special Features

- ∞ Studio & One-Bedroom Apartments with Air-Conditioning, Kitchens and Private Balconies
- ∞ Federal Rent Subsidies for those that qualify
- ∞ No Buy-In or Application Fees
- ∞ Rent includes Utilities except for telephone and cable television
- ∞ Laundry Facility and Recreation Room
- ∞ A Resident Services Coordinator on staff to assist with networking residents' community based services
- ∞ Close to Shopping, Bus Lines, Restaurants, and much more!

Smith Tower Apartments

**515 Washington Street
Vancouver, WA 98660**

Phone: 360.695.3474

Fax: 360.735.1499